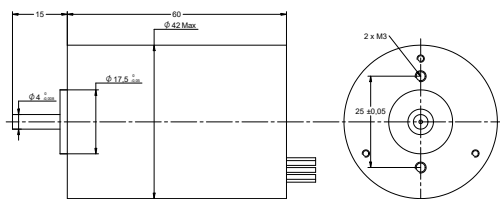
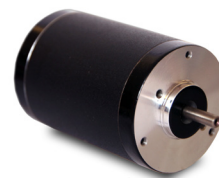


## DRAWING (mm)



## PHOTO

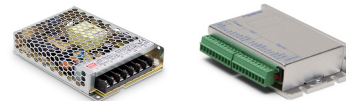


## MODEL NO. DESIGNATION

BR4260 - VOLTAGE

Example: BR4260-12

## ACCESSORIES



● C = customizations are offered on demand even for smaller quantities. Typical customizations are indicated with a green dot at column end. Please contact us for any customization request.

BRUSHLESS DC MOTOR DATA		BR4260-12	BR4260-24	C
Nominal voltage	V	12	24	
Commutator hall voltage	V	5 ~ 24	5 ~ 24	
No load speed	rpm	5600	5400	
No load current	A	0.6	0.3	
Nominal speed	rpm	4200	4200	
Nominal torque	mNm	56	56	
Nominal current	A	2.8	1.4	
Start/Stall torque	mNm	210	240	
Efficiency	%	74	74	
Nominal power	W	25	25	
Terminal resistance	Ω	0.48	1.6	
Terminal inductance	mH	0.44	1.9	
Torque constant	mNm/A	20	39	
Rotor inertia	gcm <sup>2</sup>	48	48	
Bearing type		Ball bearing		
Axial play at axial load < 3.5 N	mm	0.08		
Axial play at axial load > 3.5 N	mm	0.08		
Radial play	mm	0.02		
Max. dynamic axial load	N	10		
Max. radial load <sup>1</sup>	N	15		

## NOTES

1. 10 mm from flange.

OTHER BRUSHLESS DC MOTOR DATA		BR4260-12	BR4260-24	C
Number of pole pairs		4		
Number of phases		3		
Weight	g	400		
Operating temperature	°C	-20 to 50		
Max. winding temperature	°C	130		
Motor insulation class		B		
IP rating		IP40		
Hall sensors and power harness length	mm	300		●
Power harness		UL1007 AWG22		
Hall sensors harness		UL1007 AWG26		
Shaft length from flange	mm	15		●
Shaft diameter Ø	mm	4		
Service life	h	10000		
Manufacturing standard		ISO9001   ISO14001   TS16949		

## CABLE AND PIN CONFIGURATION

Power		Hall		C
Phase	Cable color	Phase	Cable color	
U	GRN	HU	BLU	
V	RED	HV	ORG	
W	BLK	HW	BRN	
		+5V	YEL	
		GND	WHT	