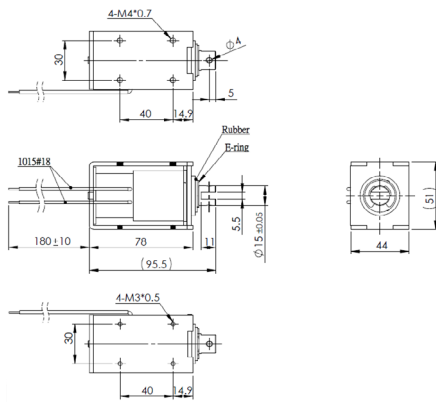


F1578L (pull type)

DRAWING (mm)



PHOTO



MODEL NO. DESIGNATION

F1578L - VOLTAGE
Example: F1578L-12V

SOLENOID DATA

Duty cycle / ED (%) ▶	Continuous (100%)	Intermittent (50%)	Intermittent (25%)	Intermittent (10%)
Watts @ 20°C ▶	13	26	52	130
Maximum time in energized state (in seconds) ▶	∞	160	80	32

Part ▼	Resistance (20°C) ± 10% (Ω) ▼	DC Volts (V) ▼			
F1578L-06V	4.5	6	8.5	12	19
F1578L-12V	18	12	17	24	38
F1578L-24V	72	24	34	48	76

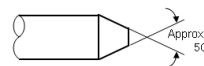
SOLENOID FEATURES AND STANDARD DATA

	STANDARD	CUSTOMIZATION OPTIONS
Type	Pull type DC solenoid	Push type DC solenoid
Cable	Flying wire 230mm	Length, type and connector
Voltage	6 to 24 VDC @ 100% ED	Other voltages upon request
Life time	At least 500.000 single strokes	
Plunger material	Carbon steel 12L14	
Protection class	IP00	
Insulation grade	B	
Operating temperature	-5°C ... +40°C	
Manufacturing quality standards	ISO9001:2008, ISO/TS 16949:2002	
RoHS compliance	Yes	
CE approval	No	
UL approval	No	

ADDITIONAL DATA

Return spring	Yes
Weight	800g

PLUNGER PROFILE



DIAGRAM

