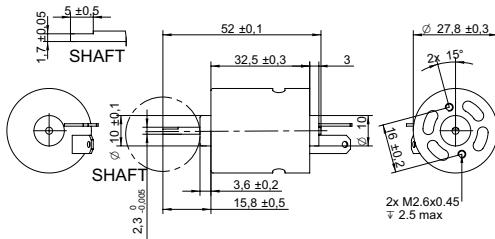
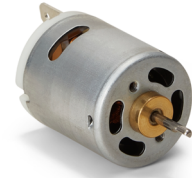


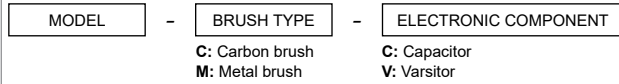
## DRAWING (mm)



## PHOTO



## MODEL NO. DESIGNATION



Example: MD5-2554AS-AA-C

## OPTIONS POWER SUPPLIES



● C = customizations are offered on demand even for smaller quantities. Typical customizations are indicated with a green dot at column end. Please contact us for any customization request.

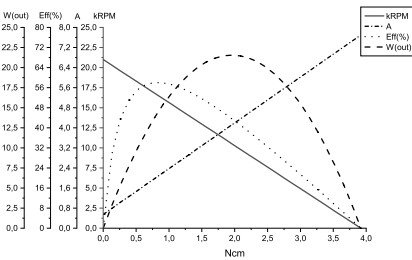
## MOTOR DATA

Model number		MD5-2554AS-AA-C	MD5-2450AS-AA-C	MD5-15120AS-AA-CV	MD5-1980AS-AA-CV	C
Diameter	mm	27.8	27.8	27.8	27.8	
Length	mm	32.5	32.5	32.5	32.5	
Nominal voltage	V	12	12	24	24	●
No load current	A	0.55	0.6	0.24	0.4	●
Nominal current	A	1.7	2	0.7	1.4	●
Start/Stall current	A	7.7	7.4	2.9	5.9	●
No load speed	rpm	21000	22000	19000	27000	●
Nominal speed	rpm	17000	17000	15000	23000	●
Nominal torque	mNm	7.2	7.6	6.5	8.7	●
Start/Stall torque	mNm	39	35	33	46	●
Nominal power	W	13	14	10	21	●
Efficiency	%	62	56	62	61	

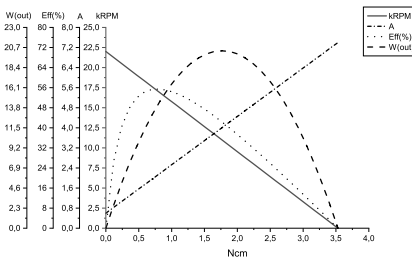
## COMMON MOTOR DATA

Shaft diameter	mm	2.3	●
Number of pole pairs		1	
Number of commutator segments		5	
Weight	g	69	
Service life	hrs	500 to 1000	
Operating temperature	°C	-10 to +60	●
Housing material		Galvanized steel	
Shaft material		High-carbon steel	●
Magnet material		Ferrite	
IP rating		IP40	
Motor insulation class		Level A	●

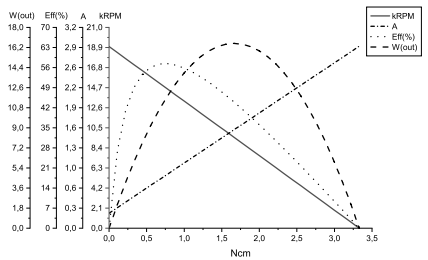
## MOTOR DATA GRAPH - MD5-2554AS-AA-C



## MOTOR DATA GRAPH - MD5-2450AS-AA-C



## MOTOR DATA GRAPH - MD5-15120AS-AA-CV



## MOTOR DATA GRAPH - MD5-1980AS-AA-CV

