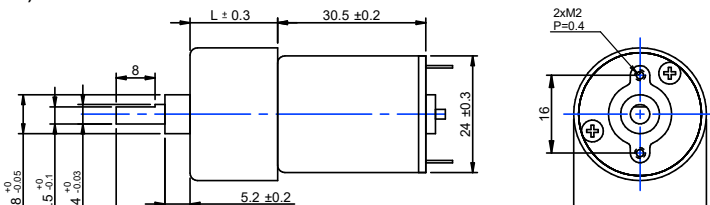
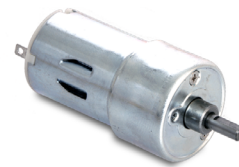


DRAWING (mm)



PHOTO



MODEL NO. DESIGNATION

SDC2730 - VOLTAGE - GEAR RATIO - F E

Example: SDC2730-24-10-F-E

ACCESSORIES



● C = customizations are offered on demand even for smaller quantities. Typical customizations are indicated with a green dot at column end. Please contact us for any customization request.

GEAR MOTOR DATA

Gear ratio	10:1	15:1	21:1	30:1	44:1	60:1	77:1	100:1	112:1	150:1	170:1	200:1	250:1	320:1	360:1	500:1	700:1	800:1	900:1	1150:1	
Nominal torque ^ gearbox limit	mNm	15	21	29	37	54	74	78^	98^	98^	120^	120^	120^	120^	120^	150^	150^	150^	150^	150^	
Nominal speed	rpm	330	220	150	110	77	56	44	34	33	22	20	18	15	12	11	7.5	5.6	5	4.5	3.6
Peak torque	mNm	88	120	120	180	180	240	240	290	290	350	350	350	350	350	440	440	440	440	440	
Nominal power	W	0.52	0.48	0.46	0.43	0.44	0.43	0.36	0.35	0.34	0.28	0.25	0.23	0.19	0.15	0.14	0.12	0.09	0.08	0.07	0.06
Gearbox efficiency	%	81	73	73	65	65	65	65	65	50	50	50	50	50	50	40	40	40	40	40	
Gearbox length L	mm	17.3	17.3	17.3	17.3	17.3	17.3	17.3	17.3	17.3	17.3	17.3	17.3	17.3	17.3	19.3	19.3	19.3	19.3	19.3	
Weight	g	75	76	76	77	77	77	77	78	78	78	78	78	78	78	79	79	79	79	79	

OTHER GEAR MOTOR DATA

Service life	h	500	
Performance tolerances	%	±15	
Operating temperature	°C	-10 to 60	●
IP rating		IP20	
Manufacturing standard		ISO 9001 ISO 14001 TS 16949	
CE label UL label		No No	●

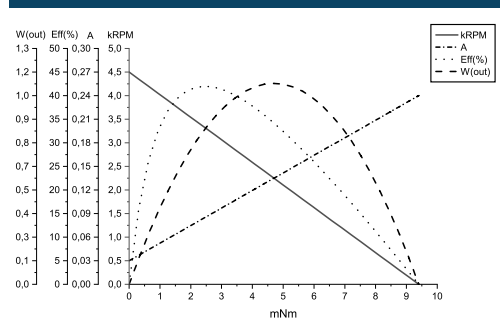
GEARBOX DATA

Backlash no load	°	≤ 2	
Radial load	N	≤ 2.9	
Shaft axial load	N	≤ 2	
Shaft press fit force max.	N	≤ 20	
Radial play ¹	mm	≤ 0.05	
Thrust play	mm	≤ 0.3	
Bearing type		Sleeve bearing	
Shaft material		Carbon steel AISI 1144	
Motor pinion material		Bronze	●
Motor pinion shape		Straight	
Material gear stage ²		Bronze, steel	●
Direction of rotation		CW or CCW by reversed V polarity	
Assembly front bell	mm	0.8	

BRUSHED DC MOTOR DATA

Nominal voltage	V	24
No load speed	rpm	4500
No load current	mA	≤ 30
Nominal speed	rpm	3400
Nominal torque	mNm	1.9
Nominal current	mA	≤ 65
Nominal power	W	0.68
Stall torque	mNm	9.4
Starting current	A	0.24
Motor commutation		Carb.b. ³
Motor rotor		Iron
Motor stator		Ferr.m. ⁴
Varistor EMC	V	27 - 45
Capacitor EMC	V	None
Resistance	Ω	110
Inductance	mH	45
Insulation class		B

BRUSHED DC MOTOR DATA GRAPH



NOTES

- 10 mm from gear flange.
- Contact us for information regarding gear stage material of a specific gear ratio.
- Carbon brush.
- Ferrite magnet.

MAGNETIC ENCODER DATA

Pulses per revolution		3 x 2	●
Channels		2	
Phase shift	°	90 ± (1/6)T	
Encoder rear cover material		None	
Sensor technical data		Refer externally to brand and part UTC-SK1816.	
Size	mm	Diameter 30 Length 12.1	
Harness connector		JST PHR-6 P=2.0-6P	●
Harness cable		AWG24 UL1007	●
Harness length	mm	100	
Connection		BLK M- RED M+ BRN Vcc GRN GND BLU A VIO B	
Supply voltage	V	Min. 5 Max. 20	
Supply current	mA	Ref. 5 Max. 10	
Open collector output		Requires external output resistors.	
Output current per channel	mA	-	