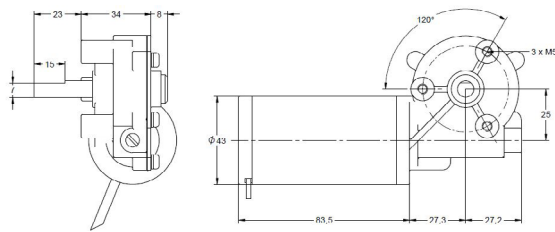
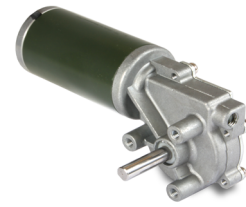


WLD4383 / Ø 43mm / 12.5W / 14.8W

DRAWING (mm)



PHOTO



MODEL NO. DESIGNATION

WLD4383 - VOLTAGE - REDUCTION - ME / OE

Example: WLD4383-12-31

ME = Magnetic encoder
OE = Optical encoder

ADDITIONAL



Encoder

GEAR MOTOR DATA

	31:1	61:1	86:1
Reduction	31:1	61:1	86:1
Nominal torque 12 V (Nm) *	0.75	1.34	1.71
Nominal speed 12 V (rpm) *	87	44	31
Nominal torque 24 V (Nm) *	0.75	1.34	1.71
Nominal speed 24 V (rpm) *	103	52	37
Length (mm)	139.5	139.5	139.5
Weight (g)	630	630	630

* Nominal speed and nominal torque have a tolerance of ± 15%

GEAR HEAD DATA

	31:1	61:1	86:1
Reduction	31:1	61:1	86:1
Max. continuous torque (Nm)	1.5	1.7	1.9
Intermittently permissible torque (Nm)	1.7	1.9	2.0
Efficiency (%)	55	50	45
Weight (g)	270	270	270
Weight (kg)	0.6	0.6	0.6

GEAR MOTOR FEATURES AND STANDARD DATA

	STANDARD	CUSTOMIZATION OPTIONS
Type	Worm gear brush dc gear motor	
Gear angle	Left	Double or single right shaft
Motor type	Iron core, brush commutation	Winding parameters
Motor brush type	Carbon brushes	
Motor terminals	Cable wires 200 mm	Wiring harnesses, cables, connectors
EMC filter	No	Yes
Gear	Plastic	Metal
Bearing	Sleeve bearing	
Shaft	Hardened stainless steel	Dimensions
Encoder option	Magnetic or optical (option)	Through shaft dim. and screw holes
Environmental protection	IP51 (with encoder IP40)	
Operating temperature	-10-...+60 °C	- 40-...+60 °C
RoHS compliance	Yes	
CE label	No	Yes
UL approval	No	Yes

MOTOR DATA

	12	24
Nominal voltage (V)	12	24
No load speed (rpm)	3600	4000
No load current (A)	1.0	0.5
Nominal speed (rpm)	2700	3200
Nominal torque (mNm)	44	44
Nominal current (A)	2.0	1.1
Stall torque mNm)	167	176
Starting current (A)	7	4
Output (W)	12.5	14.8
Length (mm)	83.5	83.5
Weight (g)	360	360