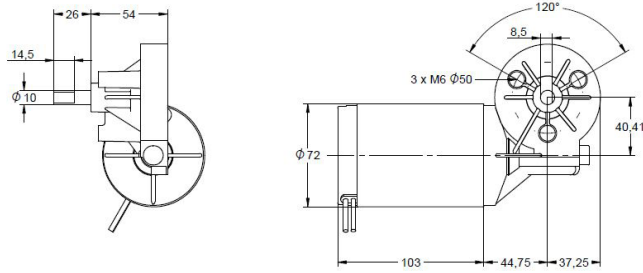


WLD70107 / Ø 70mm / 64.7W / 64.7W

DRAWING (mm)



PHOTO



MODEL NO. DESIGNATION

WRD6093 - VOLTAGE - REDUCTION - B
 B = Brake

Example: WRD6093-12-65

ADDITIONAL



Brake

GEAR MOTOR DATA

Reduction	65:1
Nominal torque 12 V (Nm) *	7.4
Nominal speed 12 V (rpm) *	53
Nominal torque 24 V (Nm) *	7.4
Nominal speed 24 V (rpm) *	53
Length (mm)	184
Weight (kg)	2.3

* Nominal speed and nominal torque have a tolerance of ± 15%

GEAR HEAD DATA

Reduction	65:1
Max. continuous torque (Nm)	7.8
Intermittently permissible torque (Nm)	8.3
Efficiency (%)	64
Weight (kg)	0.8

GEAR MOTOR FEATURES AND STANDARD DATA

	STANDARD	CUSTOMIZATION OPTIONS
Type	Worm gear brush dc gear motor	
Gear angle	Left	
Motor type	Iron core, brush commutation	Winding parameters
Motor brush type	Carbon brushes	
Motor terminals	Cable wires 200 mm	Wiring harnesses, cables, connectors
EMC filter	No	Yes
Gear	Plastic	Metal
Bearing	Sleeve bearing	
Shaft	Hardened stainless steel	Dimensions
Brake option	Electric brake (to order as option)	
Environmental protection	IP40	
Operating temperature	-10-...+60 °C	- 40-...+60 °C
RoHS compliance	Yes	
CE label	No	Yes
UL approval	No	Yes

MOTOR DATA

Nominal voltage (V)	12	24
No load speed (rpm)	3900	3900
No load current (A)	1.10	0.55
Nominal speed (rpm)	3500	3500
Nominal torque (mNm)	176	176
Nominal current (A)	7	3.5
Stall torque Nm)	1.8	1.8
Starting current (A)	42	21
Output (W)	64.7	64.7
Length (mm)	107	107
Weight (kg)	1.5	1.5